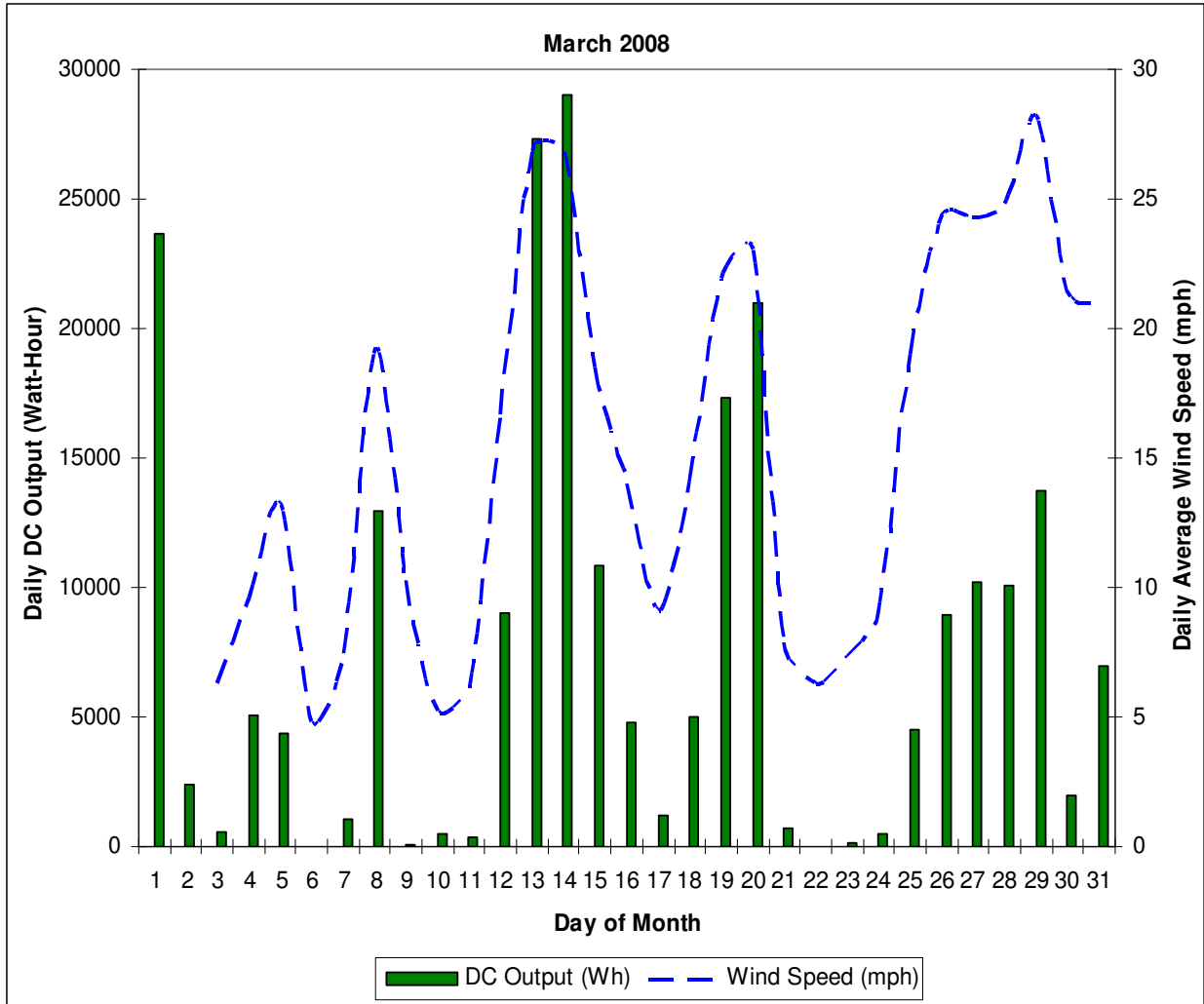


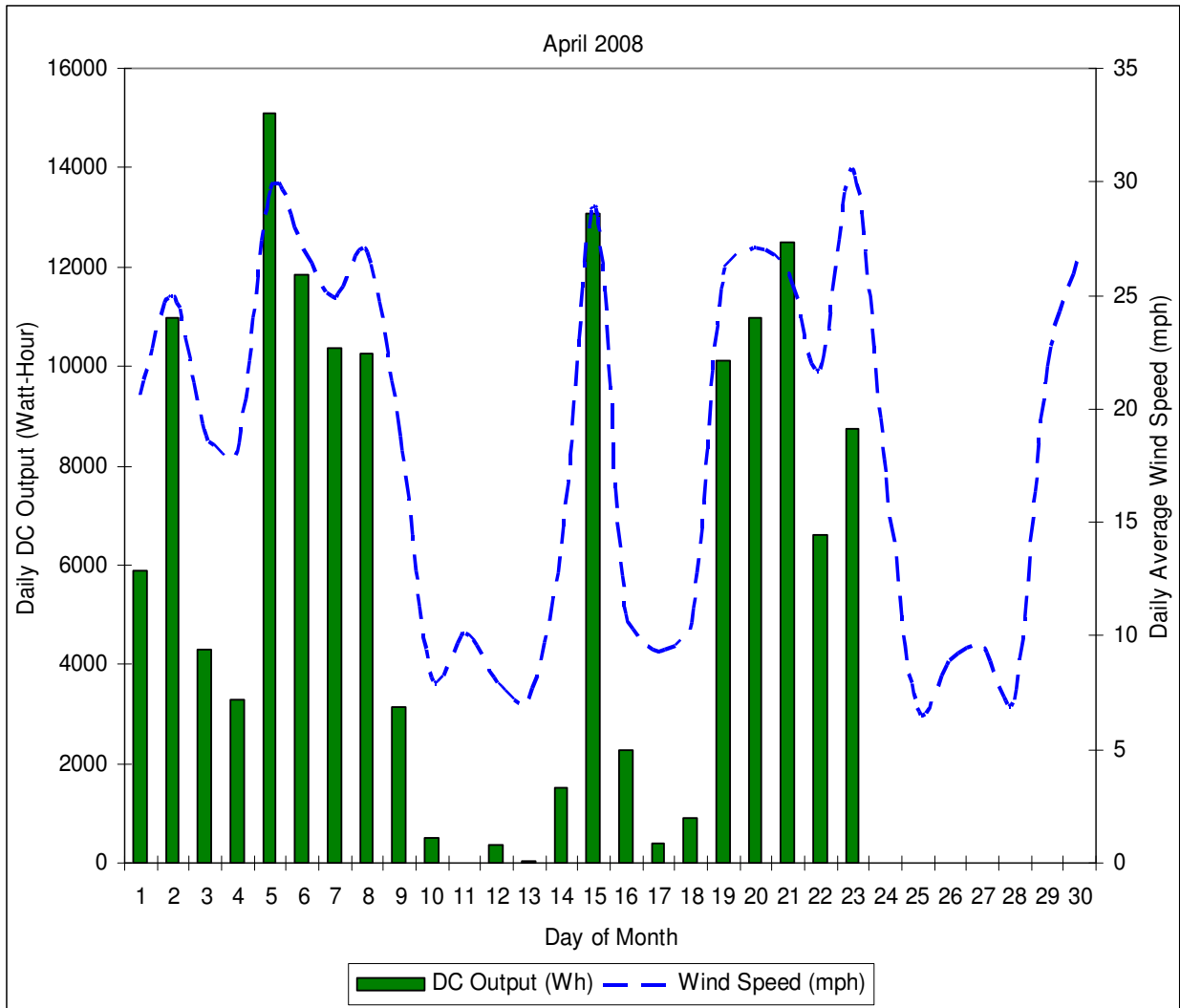
## Wind Energy Production Data Summary March 2008

Availability:	30 of 31 days
Total Energy Output:	234,040 Watt-Hours
Expected Energy Output:	218,770 Watt-Hours
Actual/Expected:	1.07
Average Wind Speed:	15.6 mph
Average Daily Energy Output:	7,801 Watt-Hours per day
Peak Daily Average Wind Speed:	28.2 mph
Peak Daily Energy Output:	29,040 Watt-Hours



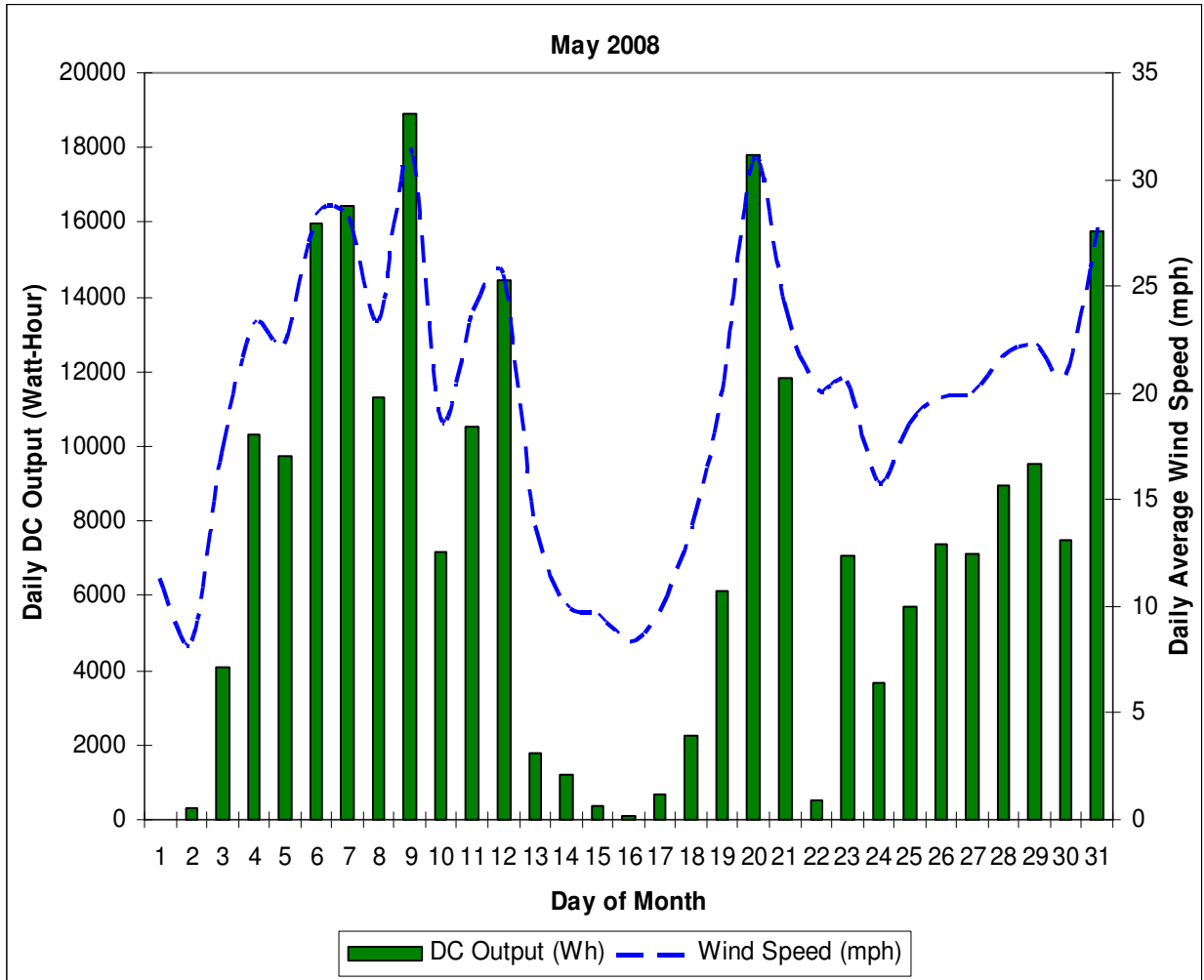
## Wind Energy Production Data Summary April 2008

Availability:	22 of 30 days
Total Energy Output:	143,140 Watt-Hours
Expected Energy Output:	302,100 Watt-Hours
Actual/Expected:	0.47
Average Wind Speed:	18.2 mph
Average Daily Energy Output:	6,506 Watt Hours per day
Peak Daily Average Wind Speed:	30.5 mph
Peak Daily Energy Output:	15,090 Watt-Hours



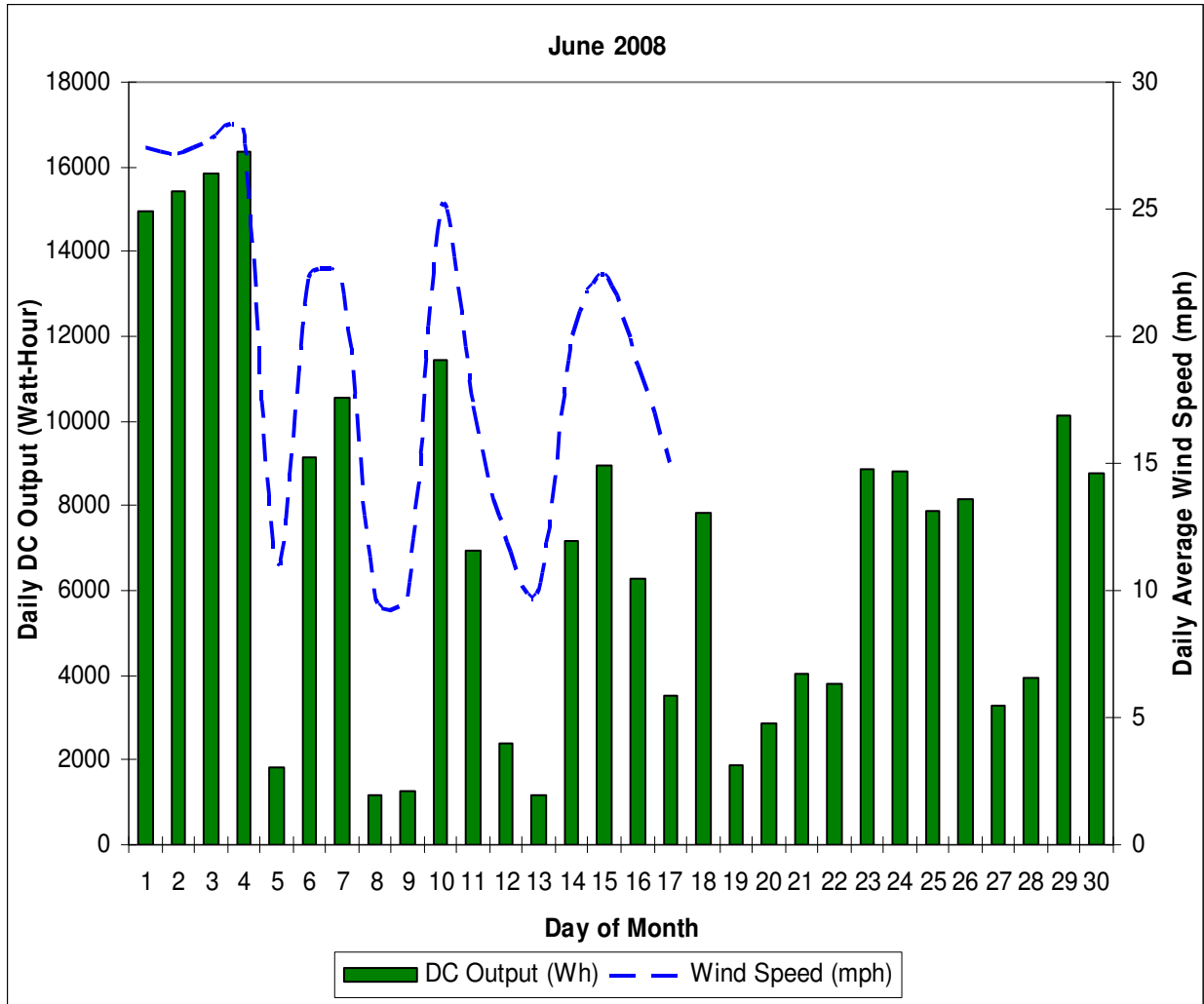
## Wind Energy Production Data Summary May 2008

Availability:	30 of 31 days
Total Energy Output:	234,610 Watt-Hours
Expected Energy Output:	334,580 Watt-Hours
Actual/Expected:	0.70
Average Wind Speed:	19.7 mph
Average Daily Energy Output:	7,820 Watt-Hours per day
Peak Daily Average Wind Speed:	31.4 mph
Peak Daily Energy Output:	18,900 Watt-Hours



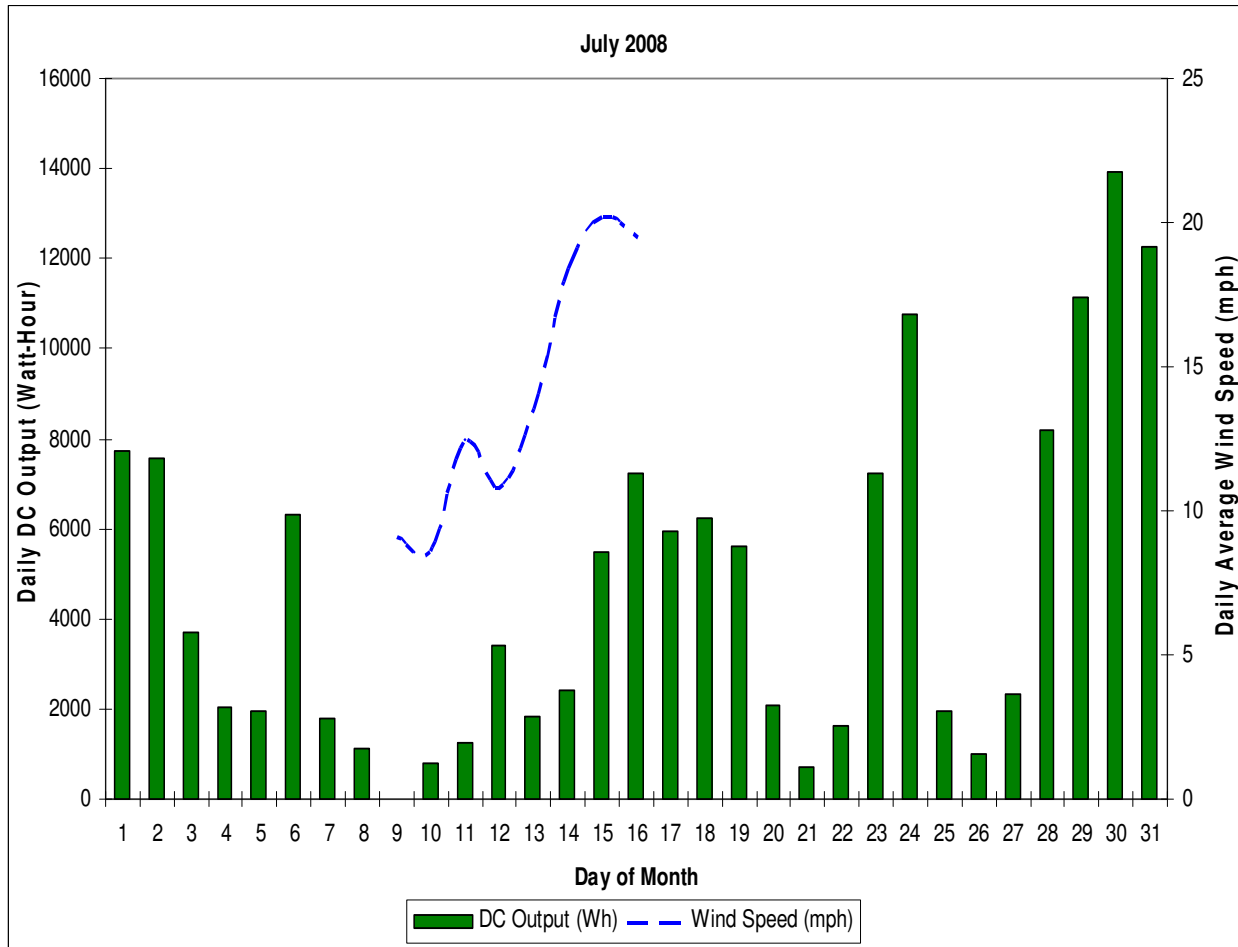
## Wind Energy Production Data Summary June 2008

Availability:	30 of 30 days
Total Energy Output:	214,680 Watt-Hours
Expected Energy Output:	174,820 Watt-Hours
Actual/Expected:	1.23
Average Wind Speed:	19.3 mph
Average Daily Energy Output:	7,156 Watt-Hours per day
Peak Daily Average Wind Speed:	28.2 mph
Peak Daily Energy Output:	16,370 Watt-Hours



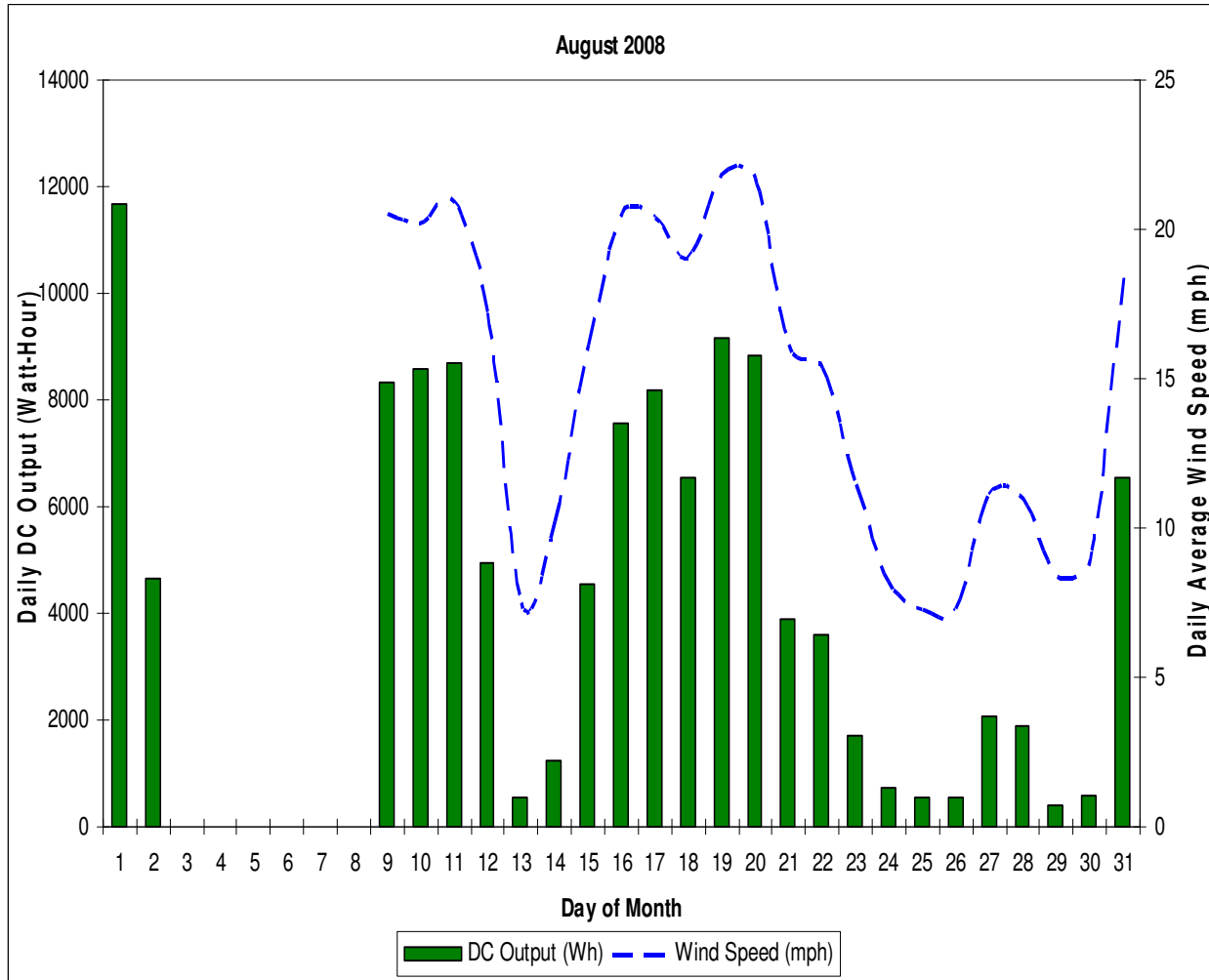
## Wind Energy Production Data Summary July 2008

Availability:	30 of 31 days
Total Energy Output:	145,630 Watt-Hours
Expected Energy Output:	Not Available
Actual/Expected:	Not Available
Average Wind Speed:	Not Available
Average Daily Energy Output:	4,853 Watt-Hours per day
Peak Daily Average Wind Speed:	Not Available
Peak Daily Energy Output:	13,910 Watt-Hours



## Wind Energy Production Data Summary August 2008

Availability:	23 of 31 days
Total Energy Output:	99,660 Watt-Hours**
Expected Energy Output:	112,630 Watt-Hours**
Actual/Expected:	0.88**
Average Wind Speed:	14.7 mph
Average Daily Energy Output:	4,640 Watt Hours per day
Peak Daily Average Wind Speed:	21.8 mph
Peak Daily Energy Output:	11,670 Watt-Hours



\*\* Based upon 8/9/08 – 8/31/08

## Wind Energy Production Data Summary September 2008

Availability:	31 of 31 days
Total Energy Output:	92,640 Watt-Hours
Expected Energy Output:	115,020 Watt-Hours
Actual/Expected:	0.81
Average Wind Speed:	12.9 mph
Average Daily Energy Output:	3,090 Watt-Hours per day
Peak Daily Average Wind Speed:	23.3 mph
Peak Daily Energy Output:	11,930 Watt-Hours

